



REGENERATIVE MATERIALS

New Order of Fashion

License and Terms of Use

The Transitions Project Open Educational Resources are educational materials that complement the modular curricula developed within the Transitions project under the GA 101056544.

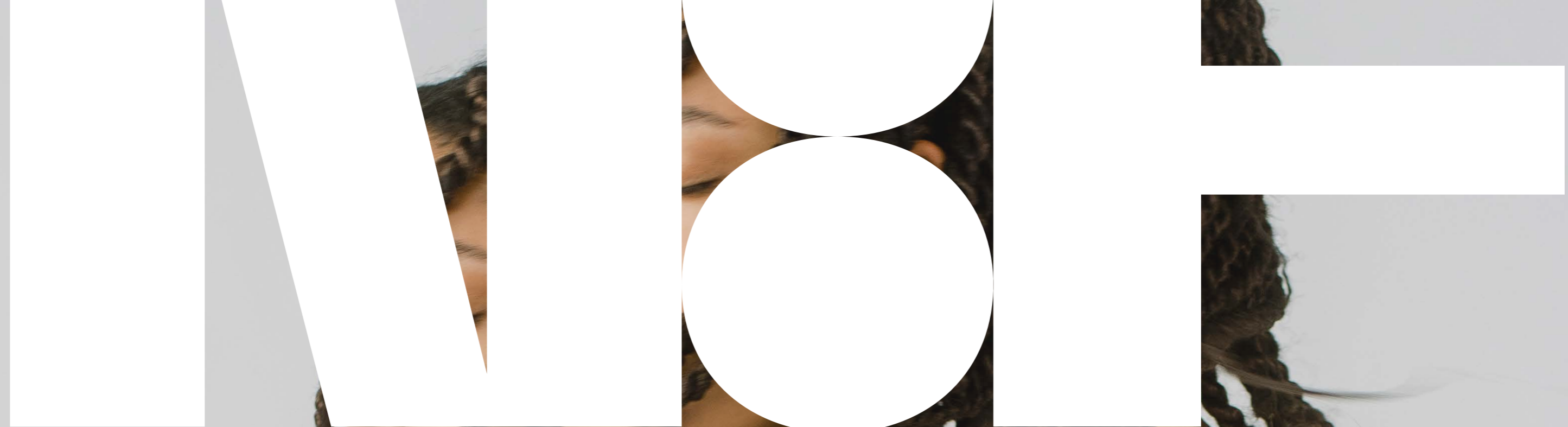
The materials are licensed under the Creative Commons Attribution-ShareAlike 4.0 International license, allowing users to use, remix, and share them, provided that they adhere to the following conditions:

- Attribution: The original creator must be clearly credited, either as an attribution or reference for any remixed content.
- Source Link: The user must include a link to transitionsproject.eu to direct learners to the original source.
- Branding: The Transitions project logo must be displayed either on the slides or in the credits.
- ShareAlike — If you remix, transform, or build upon the material, you must distribute your contributions under the [same license](https://creativecommons.org/licenses/by-sa/4.0/) as the original.

TRANSNATIONAL TRANSITIONS LAB

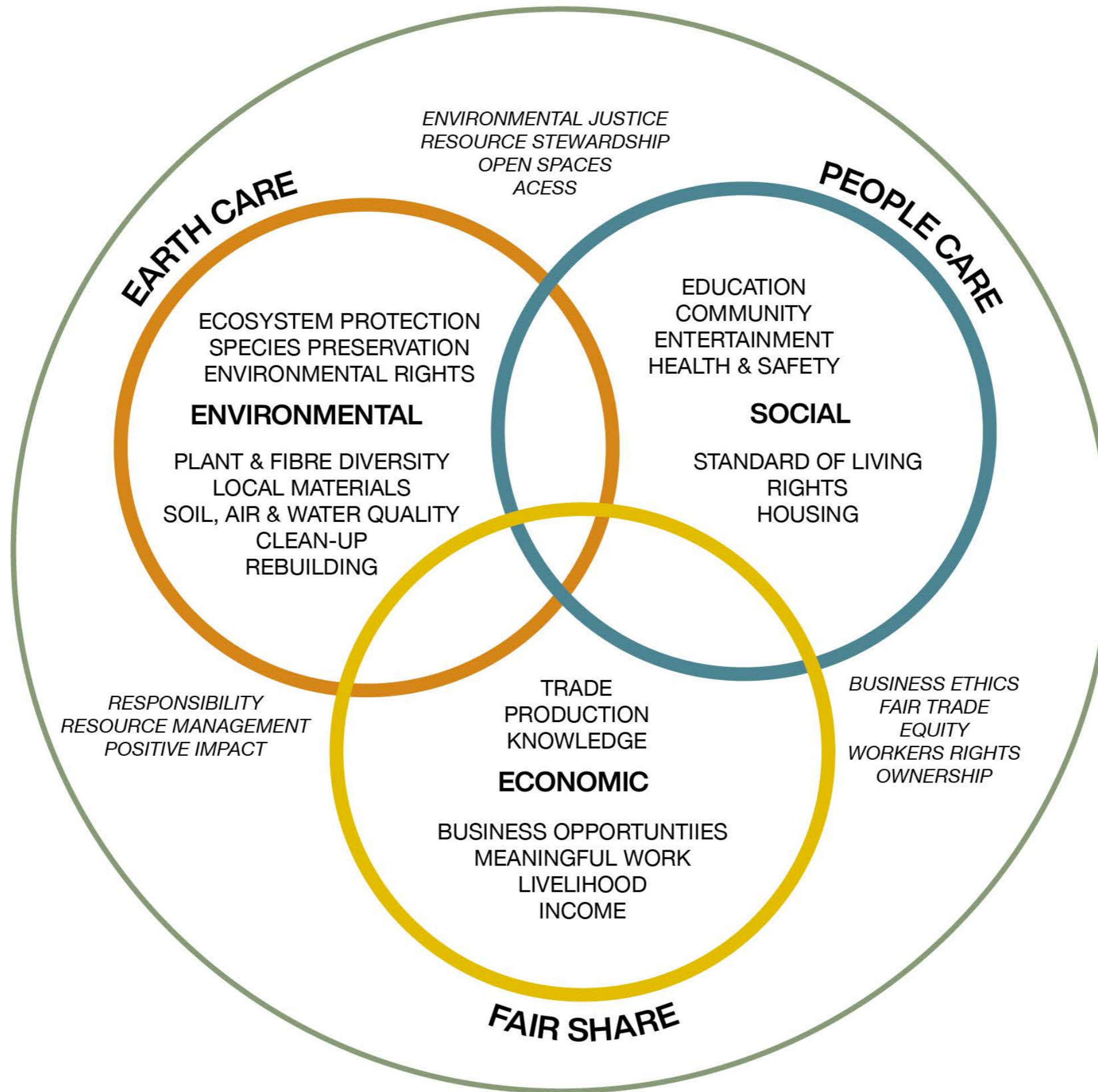
BIELLA, ITALY

Beyond Sustainability // HEI



x TLab Biella

February 5, 2025



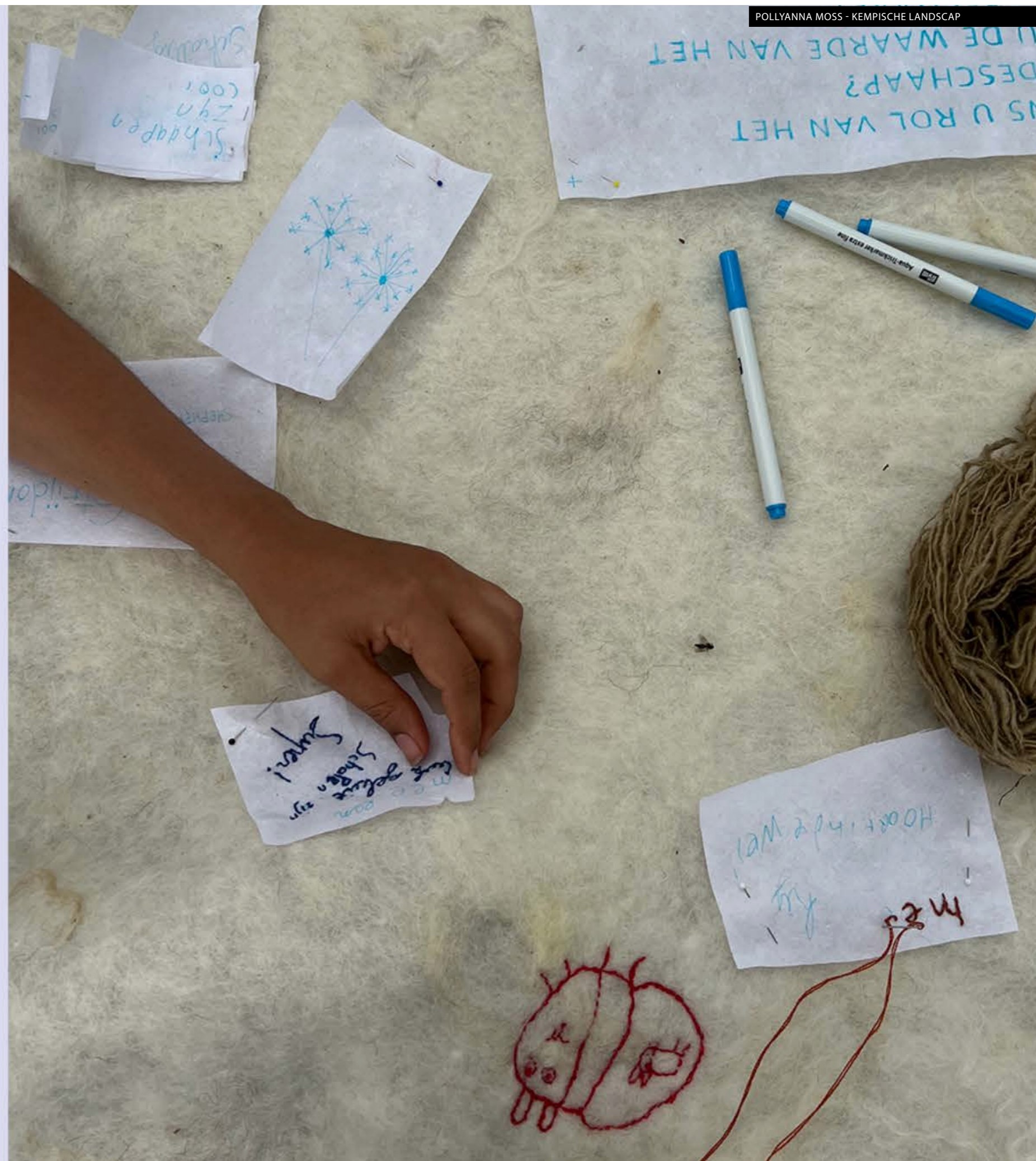
POLLYANNA MOSS



POLLYANNA MOSS



POLLYANNA MOSS



Design as connecting?

@pollyannamoss
www.pollyannamoss.com



**‘Waste’ wool
is a problem caused
by us:**

**industry standards,
user expectations
(reinforced by
market), division of
farming practices
for efficiency, and
climate change**

**W
A
S
T
E

W
O
O
L**



**Pre-processing
(Raw wool)**



**Low-grade wool
Coloured wool
Low quality fleece parts**



**Pre-consumer
(fibre and fabric
leftover from the
production process)**



**Overproduction
Overstock/buying**



**Post-consumer
(fibres, fabrics,
garments)**



**Worn end of use clothes
Household textiles
Carpets**



SOPHIE VAN HELVOORT

SOPHIE VAN HELVOORT - THE BLACK SHEEP



KELLY
KONINGS



KELLY KONINGS - HYBRID FORMS OF DRESSING



@kellykonings.textiles



LEEVI
IKAHEIMO

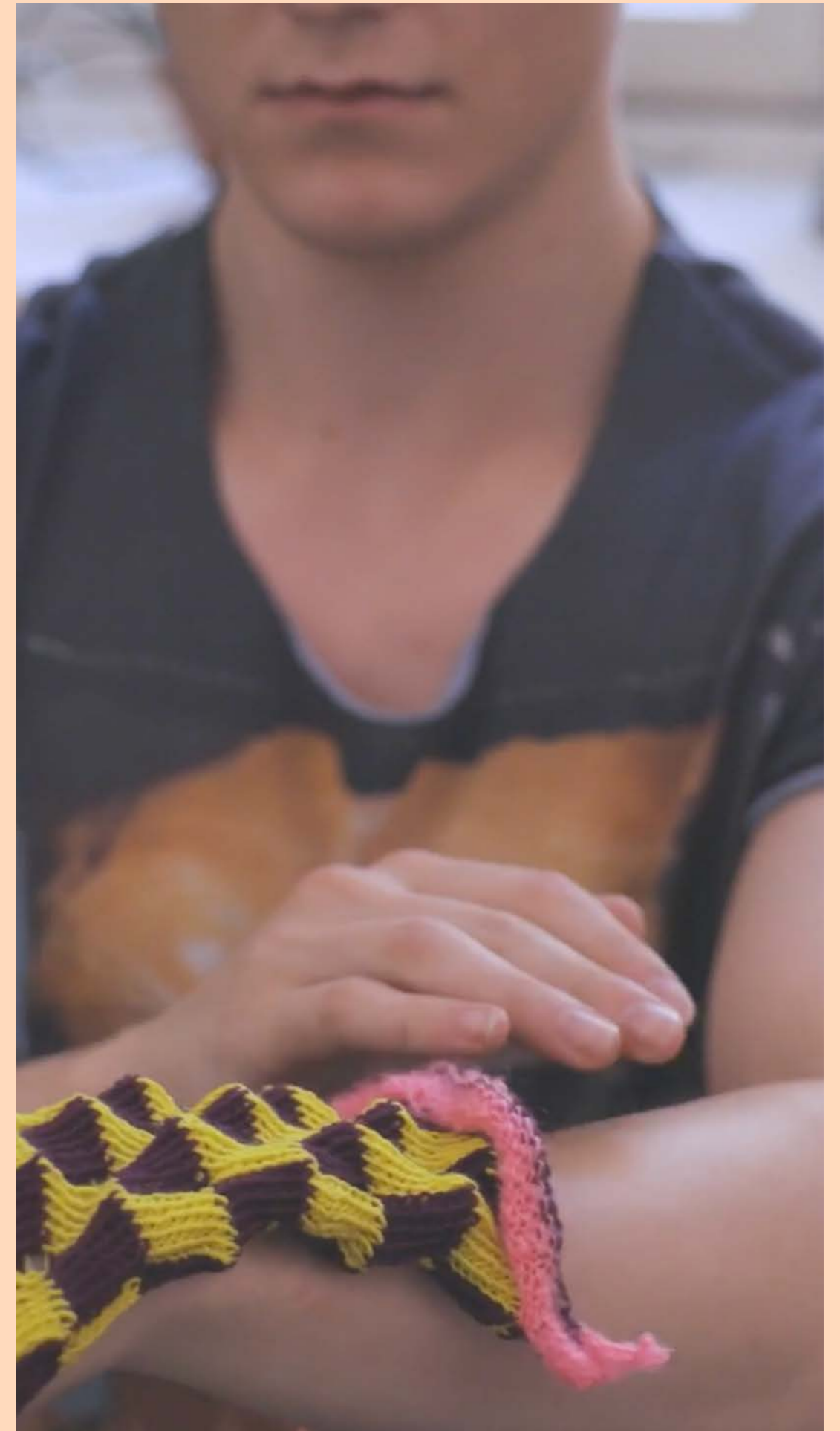
Line-up NÄYTÖS 21

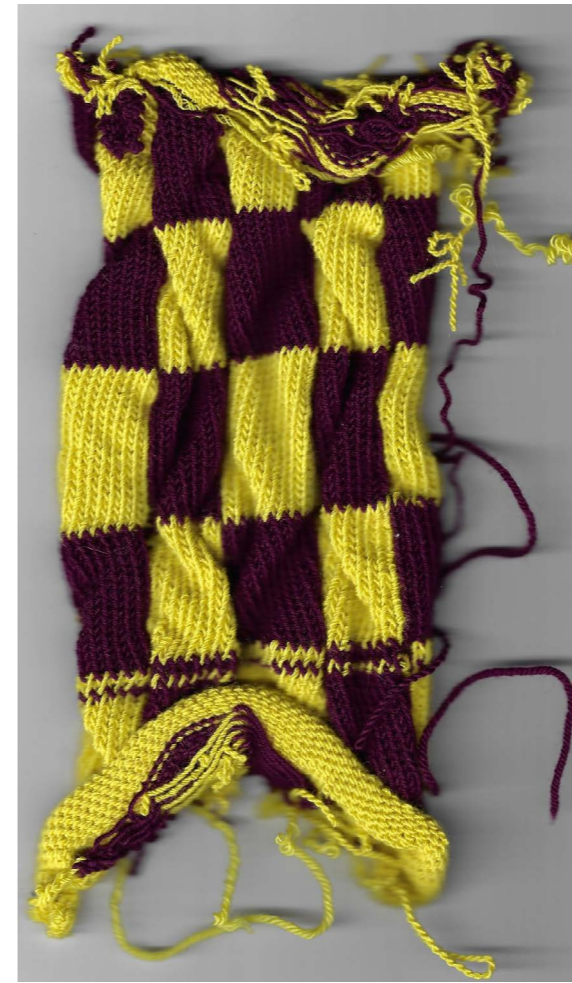


**LEEVI
IKAHEIMO
Material Agency
Research Project**

**Post-consumer wool
over-spinning**

@leevittu





LEEVI
IKAHEIMO

LEEVI IKAHEIMO - ARP MATERIAL AGENCY



BABAA

- brand invested in ethical wool production
- limited range
- one-size garments
- family owned factory
- nominated suppliers
- know their shephards
- follow traditional grazing methods (transhumance)

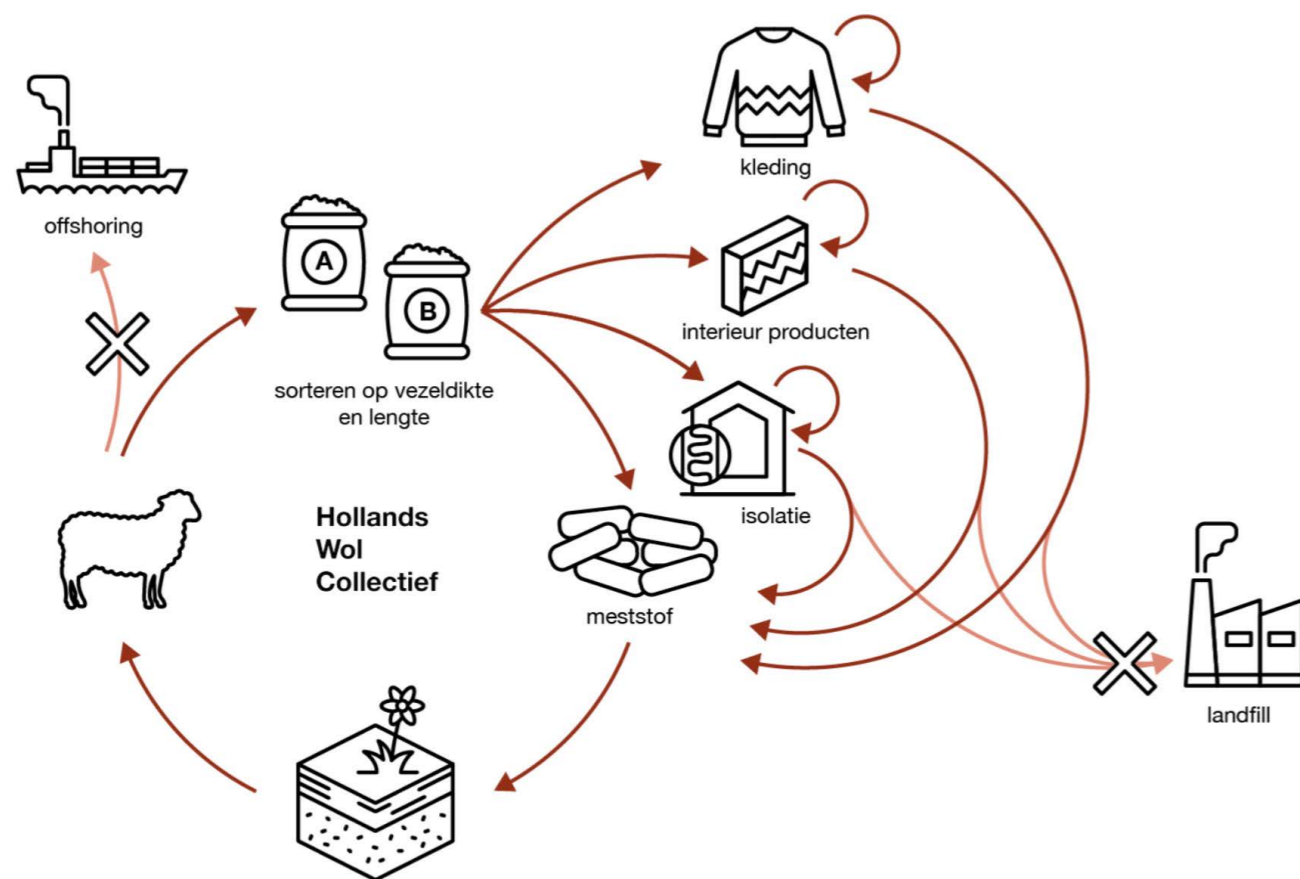
www.babaa.es



HOLLANDS WOL COLLECTIEF



HOLLANDS WOL COLLECTIEF



KELLY KONINGS - HYBRID FORMS OF DRESSING

GRIETJE SCHEPERS

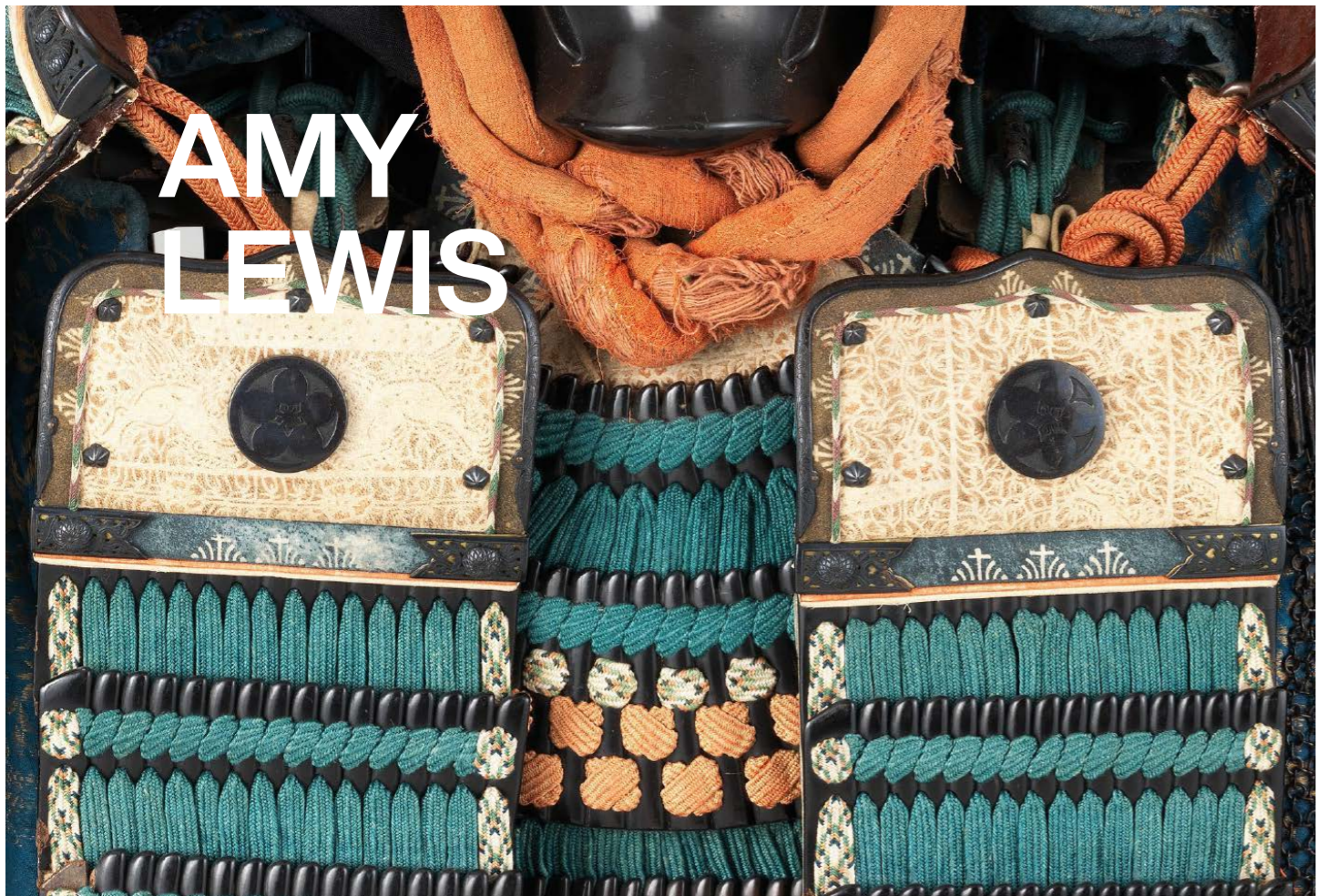
**AMY
LEWIS**

**MANUS X MACHINA
WEAVING**

**Textiles designed
for modularity and
disassembly**

**@_1_6m2
1-6m2.com**





PRISS
NIINIKOSKI

@prissui

PRISS NIINIKOSKI





PRISS NIINIKOSKI



PRISS NIINIKOSKI

ARTISTIC RESEARCH: REGENERATION

Lace-making from floral waste hand-cordage



ELINA
SILINA

@elina_silina_



ELINA
SILINA



ASA BRIET BRATTABERG

TALES TOLD IN TANGLES

Hand-spun icelandic and faroe island wool from her grandparents sheep, knitted by herself & her grandmother, a celebration of inter-generational craft knowledge & history

@asabrietbratta



MILK OF LIME

@milk_of_lime



MILK OF LIME



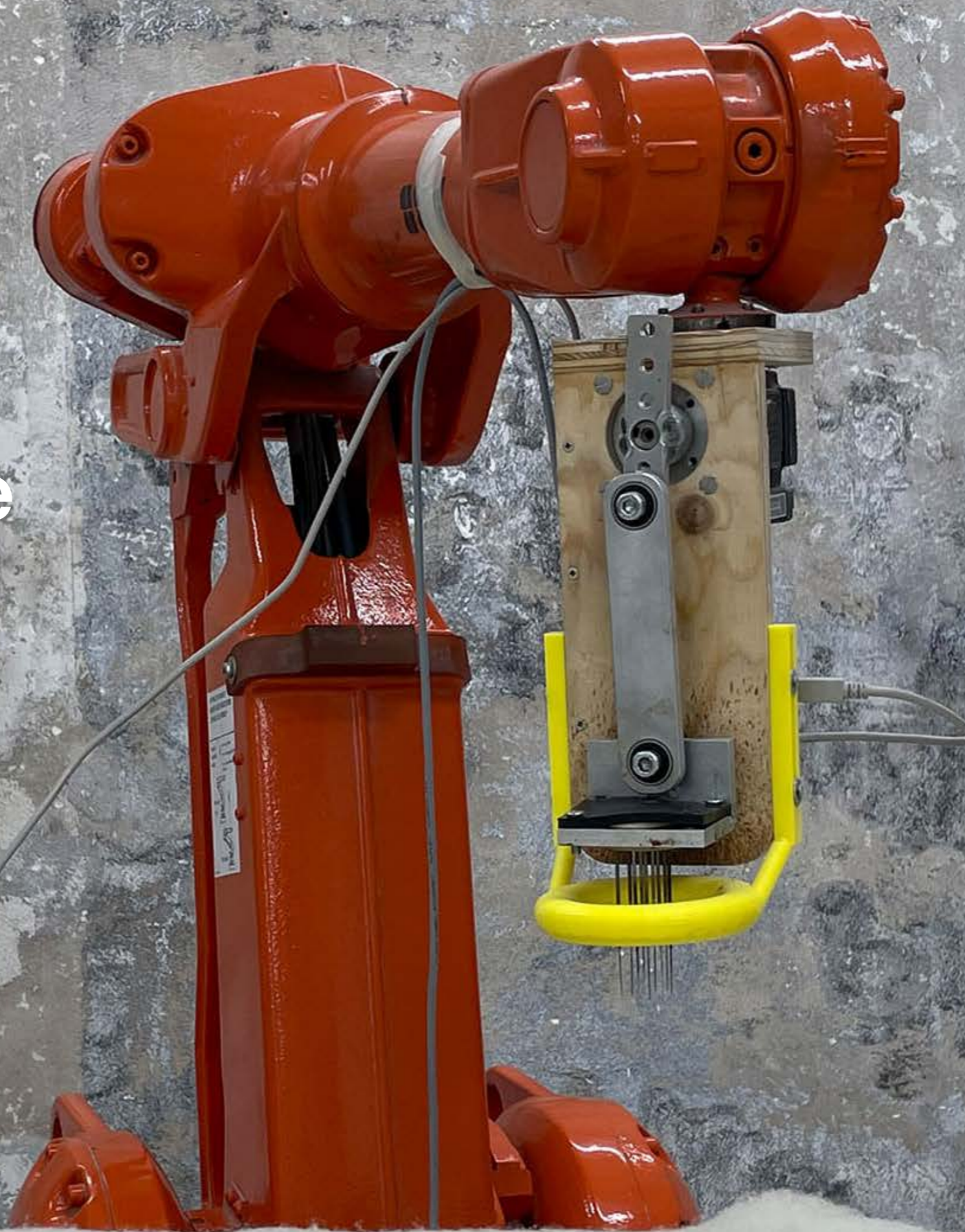
MILK OF LIME - MXM: BOTANICAL DYE



WOOL
TOOLS

Atelier LUMA
AATB
Carolyn Schelke

wool-tools.com





transiti*ns