

Socioeconomic and Governmental Factors

L. Berger-Andersson

License and Terms of Use

The Transitions Project Open Educational Resources are educational materials that complement the modular curricula developed within the Transitions project under the GA 101056544.

The materials are licensed under the Creative Commons Attribution-ShareAlike 4.0 International license, allowing users to use, remix, and share them, provided that they adhere to the following conditions:

- Attribution: The original creator must be clearly credited, either as an attribution or reference for any remixed content.
- Source Link: The user must include a link to transitionsproject.eu to direct learners to the original source.
- Branding: The Transitions project logo must be displayed either on the slides or in the credits.
- ShareAlike — If you remix, transform, or build upon the material, you must distribute your contributions under the [same license](https://creativecommons.org/licenses/by-sa/4.0/) as the original.



Socioeconomic and Governmental Factors



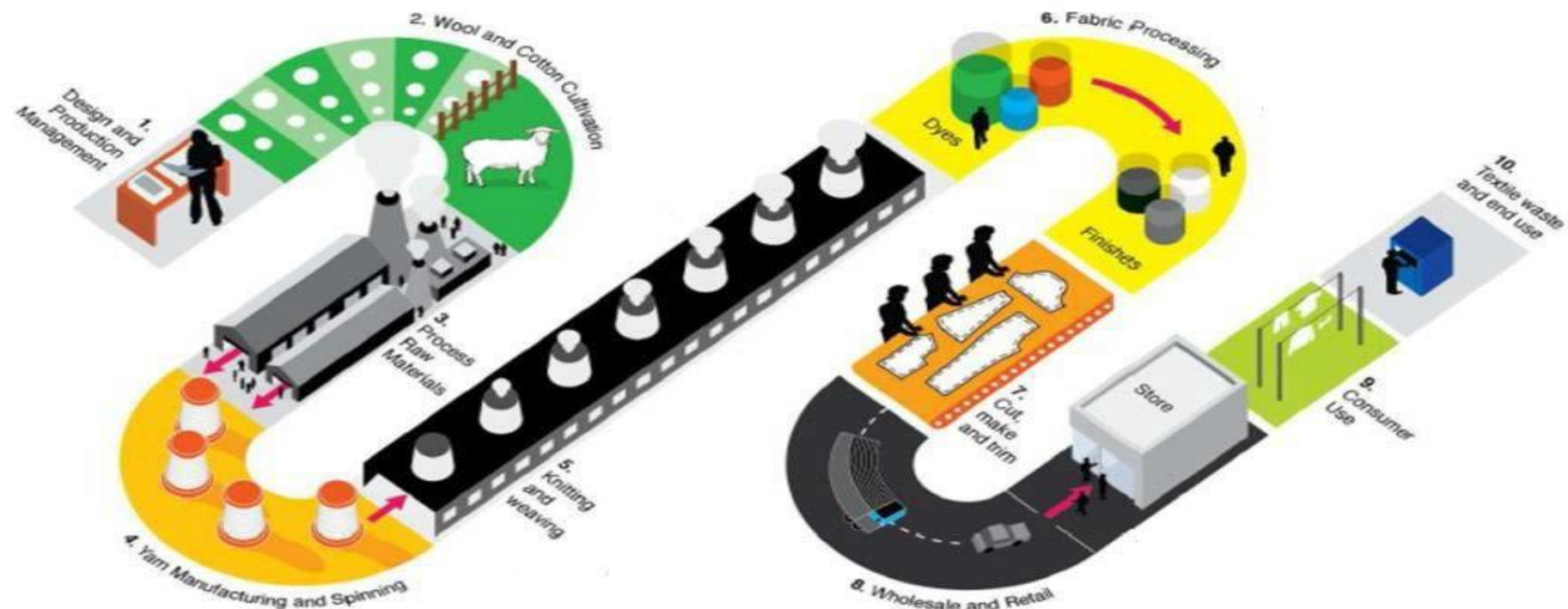
License and Terms of Use

The Transitions Project Open Educational Resources are educational materials that complement the modular curricula developed within the Transitions project under the GA 101056544.

The materials are licensed under the Creative Commons Attribution-ShareAlike 4.0 International license, allowing users to use, remix, and share them, provided that they adhere to the following conditions:

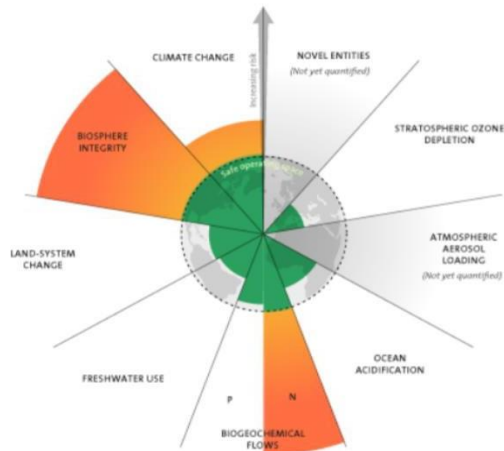
- Attribution: The original creator must be clearly credited, either as an attribution or reference for any remixed content.
- Source Link: The user must include a link to transitionsproject.eu to direct learners to the original source.
- Branding: The Transitions project logo must be displayed either on the slides or in the credits."

Intro – From Fibre to ready Product

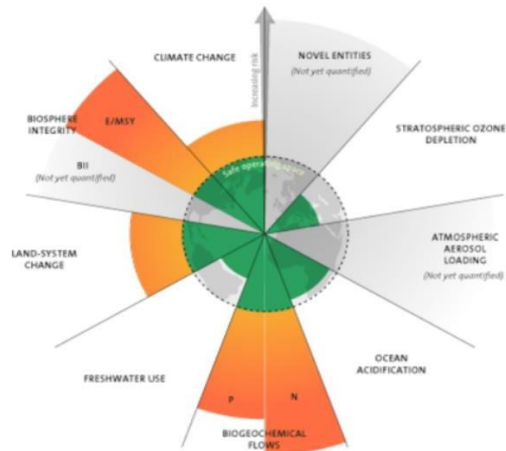


Planetary boundaries

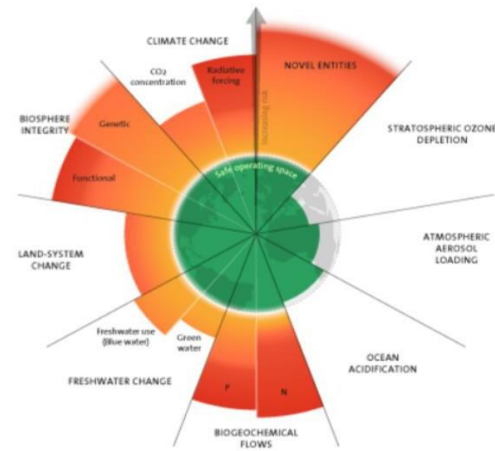
2009

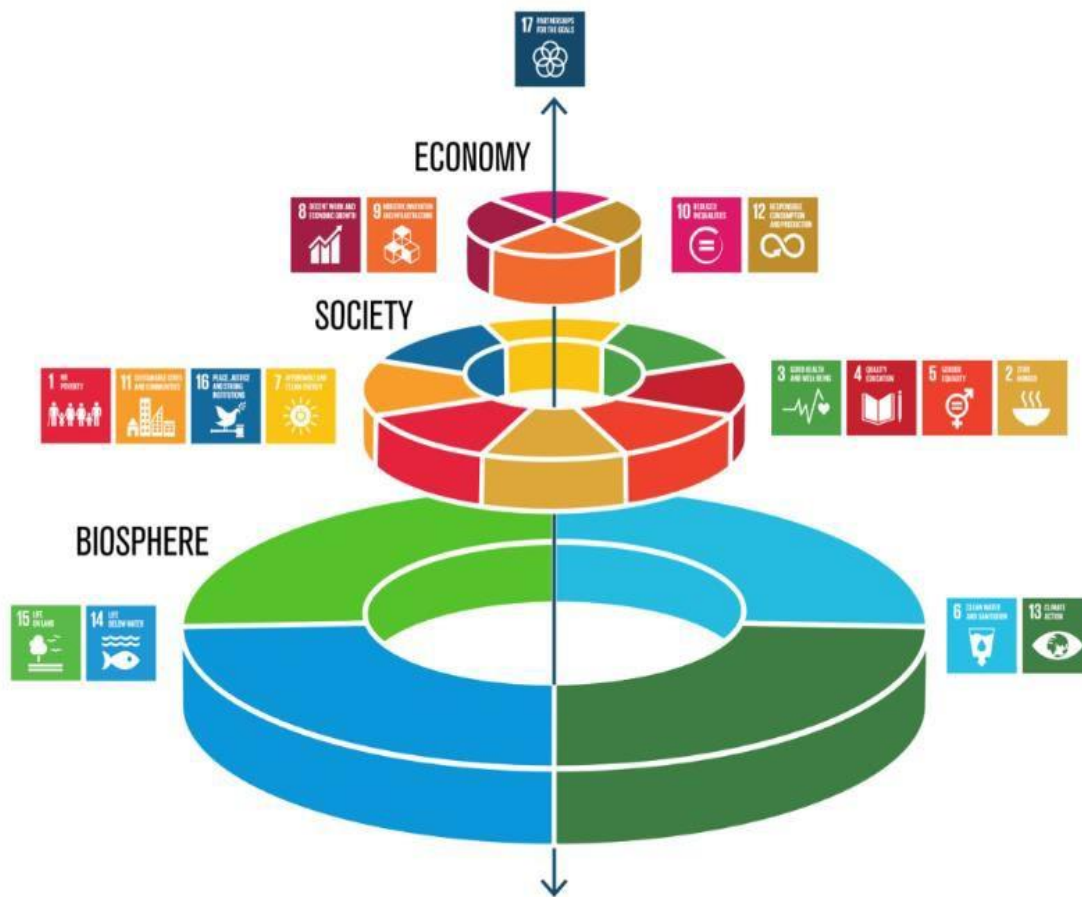


2015



2023



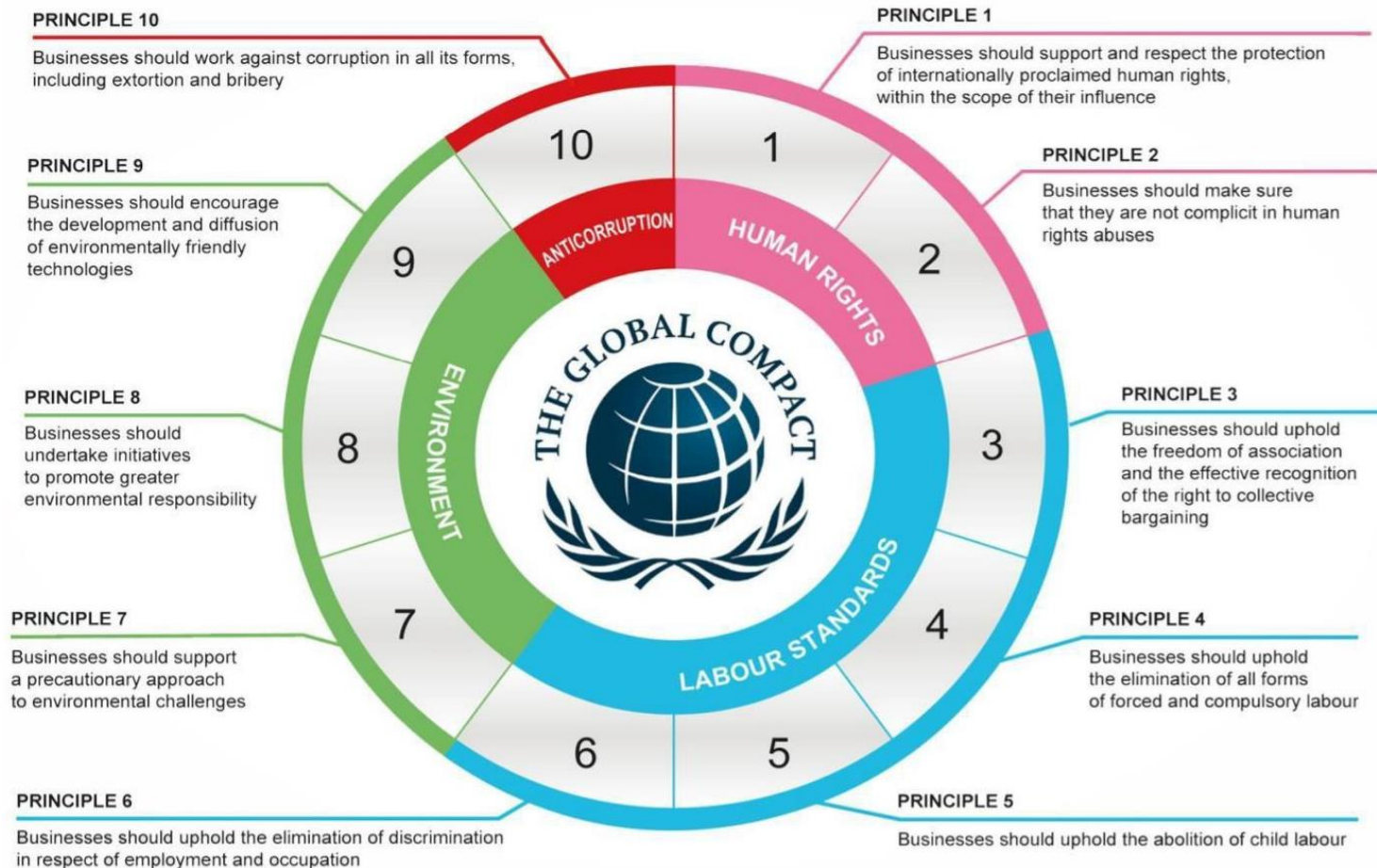


SDG 8

Decent work and economic growth:

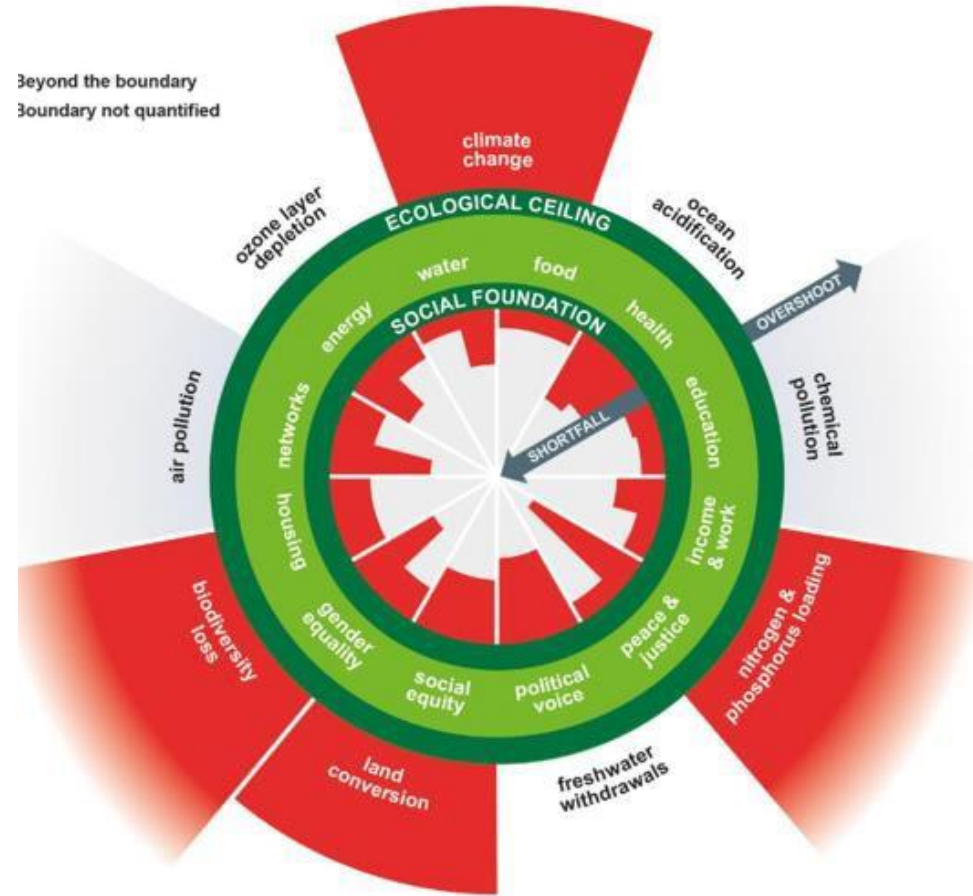
Promote sustained, inclusive and sustainable economic growth, full and productive employment and decent work for all



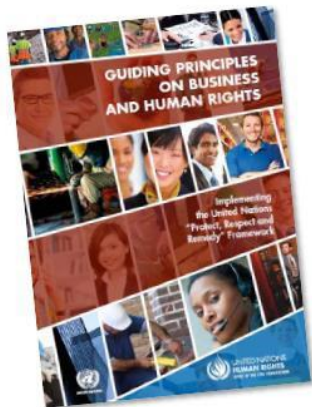


The Doughnut economy

- Visual framework for sustainable development
- Developed by Kate Raworth
- Ted talks with Kate Raworth presenting the model [link](#)

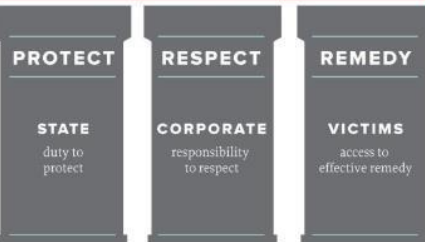


Text



THREE PILLARS of the UN GUIDING PRINCIPLES

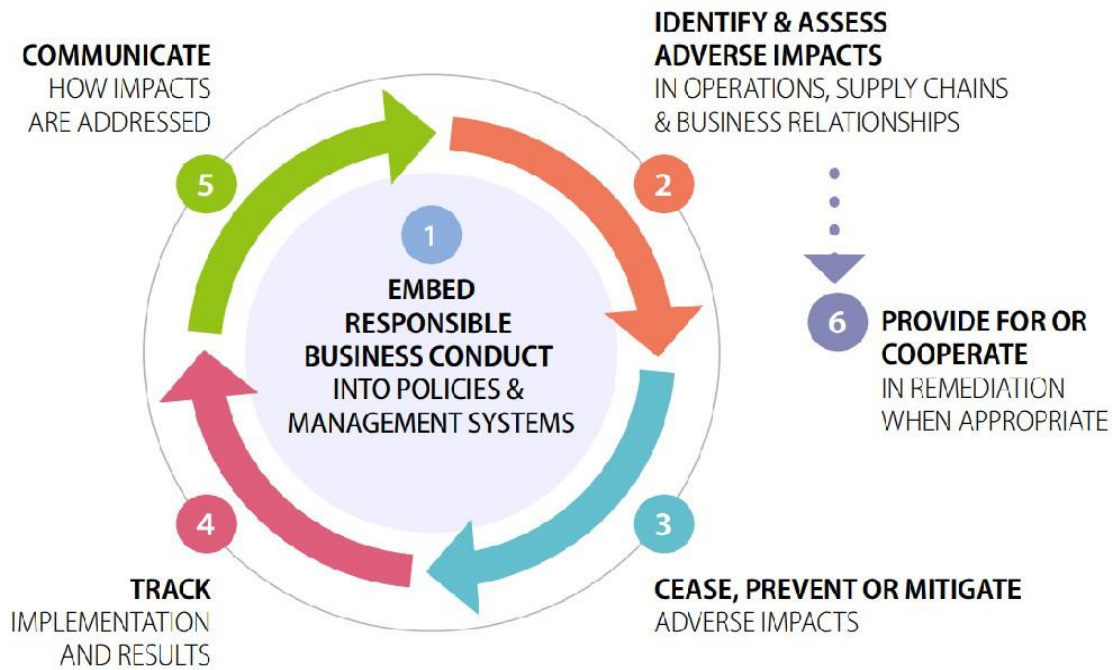
HUMAN RIGHTS



International frameworks



OECD Due diligence model



The global risk index

Critical questions to answer internally:

- Where are our products made?
- What rawmaterials are we using?
- Where does the rawmaterial come from?
- What production processes are included in the product?



Ti



Disposition

CONTENTS

| | | |
|---|---|----|
| | INTRODUCTION | |
| → | About the report | 2 |
| | Sustainability highlights | 3 |
| | CEO statement | 4 |
| | Sustainability commitments | 6 |
| | Quality | 7 |
| | GENERAL INFORMATION | |
| | ESRS 2 General disclosures | 10 |
| | Basis for preparation | 10 |
| → | Sustainability governance | 11 |
| | Strategy & business model | 14 |
| | Overview of ESVAGT's approach to sustainability | 18 |
| | Engaging with stakeholders | 20 |
| | Materiality assessment process | 21 |
| | Impacts, risks and opportunities | 24 |
| | ENVIRONMENTAL INFORMATION | |
| | E1 Climate change | 30 |
| | ESVAGT's transition plan | 30 |
| | Accounting policies - environmental performance | 43 |
| | Second green fuel SOV signed with Ørsted | 44 |
| | E2 Pollution | 45 |
| | Offshore carbon capture and storage project | 48 |
| | Taxonomy disclosure | 49 |
| | SOCIAL INFORMATION | |
| | S1 Own workforce | 51 |
| | Safety - own workforce | 51 |
| | Working conditions - own workforce | 55 |
| | Equal treatment & opportunities for all - own workforce | 60 |
| | Accounting policies - social information | 63 |
| | S2 Workers in the value chain | 65 |
| | Safety - protecting workers across our value chain | 65 |
| | GOVERNANCE INFORMATION | |
| | G1 Business conduct | 69 |
| | Promoting a culture of integrity | 69 |
| | Accounting policies - governance information | 75 |
| | INDEXES | |
| | Index of ESRS disclosure requirements | 77 |
| | List of datapoints in cross-cutting and topical standards that derive from other EU legislation | 79 |
| | Management signatures | 87 |

ABOUT THIS REPORT

The sustainability report presents the Environmental, Social, and Governance (ESG) performance of ESVAGT A/S, along with its management approach to material sustainability topics for the period 1 January to 31 December 2023. Critical or material events occurring on or after 1 January 2024 and up until the publication date are also covered in this report.

The sustainability report supplements ESVAGT's 2023 annual report and has been prepared in compliance with sections 99a, 99b and 99d of the Danish Financial Statements Act.

The report has been restructured to include a sustainability statement and has been guided by the requirements of the Corporate Sustainability Reporting Directive (CSRD) and the European Sustainability Reporting Standards (ESRS). A full explanation of the basis for preparation of the sustainability statement is provided in the General Information section.



Corporate Sustainability Due Diligence

#CorporateSustainability

Companies that are included:

Companies within the EU

- >1 000 employees and global net sales of >€450 million
- Parent companies in groups that achieve threshold values
- Turnover from franchise or license agreements of >22.5 million. and global net sales of >80 million.

Companies outside the EU

- Annual net sales of >€450 million. within the EU
- Parent companies in groups that achieve threshold values
- Turnover from franchise or license agreements of >22.5 million. and net turnover of >80 million within the EU.

Titl





Products made with forced labour on the Union market

from 19th Nov

The council had adopted a regulation prohibiting products made of forced labour within EU

Forbid the placing and making available on the Union market,
or the export from the Union market,
of any product made using forced labour

The regulation will apply 3 years after the date of entry in force

Link [link](#)

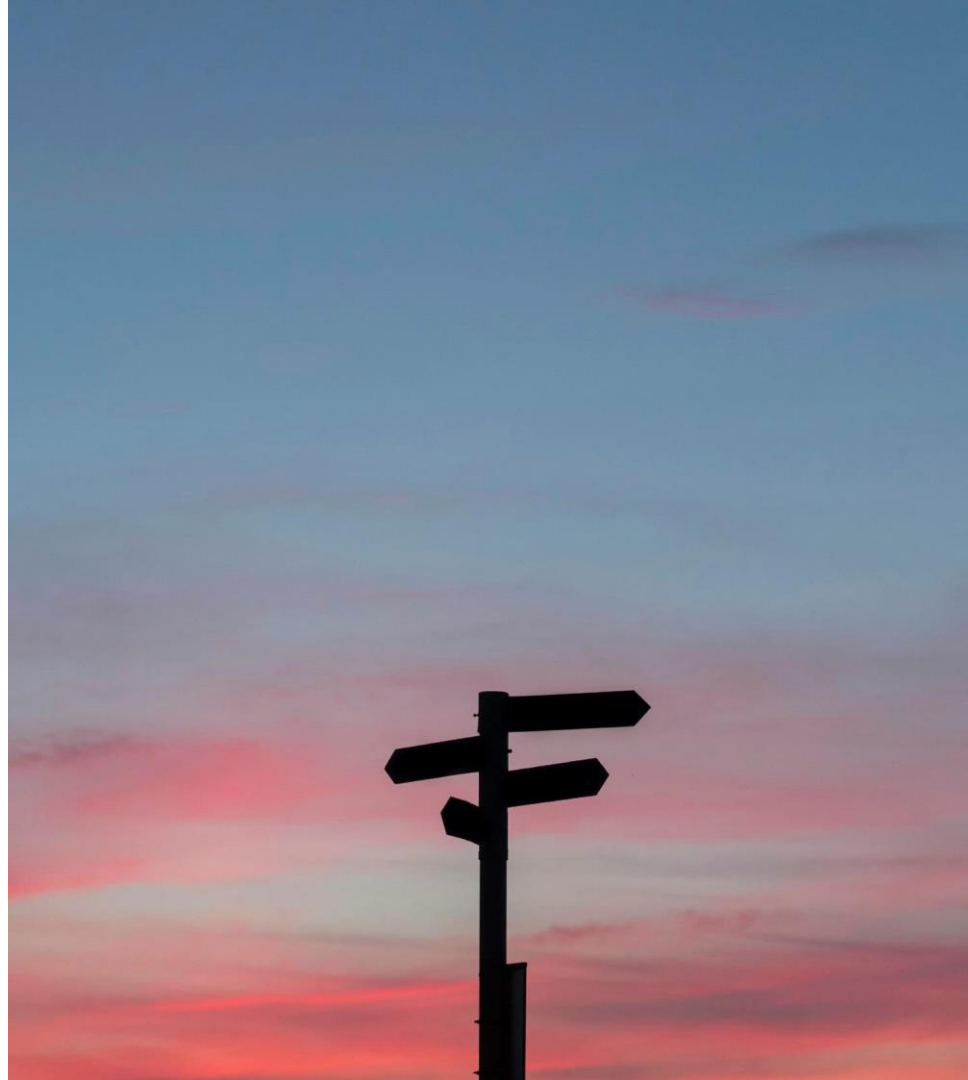
CSRD?

- An EU directive that aims to improve corporate sustainability reporting, drive increased transparency and comparability, and include more companies under the mandatory sustainability reporting requirements
- Enters into force 2024-01-01.
- The legal requirements countrywise will be updated according to the requirements in CSRD and will be significantly more comprehensive



The biggest changes

- The expansion to many more companies
- The common european standards ESRS
- Requirements for independent third parties (auditors) revision

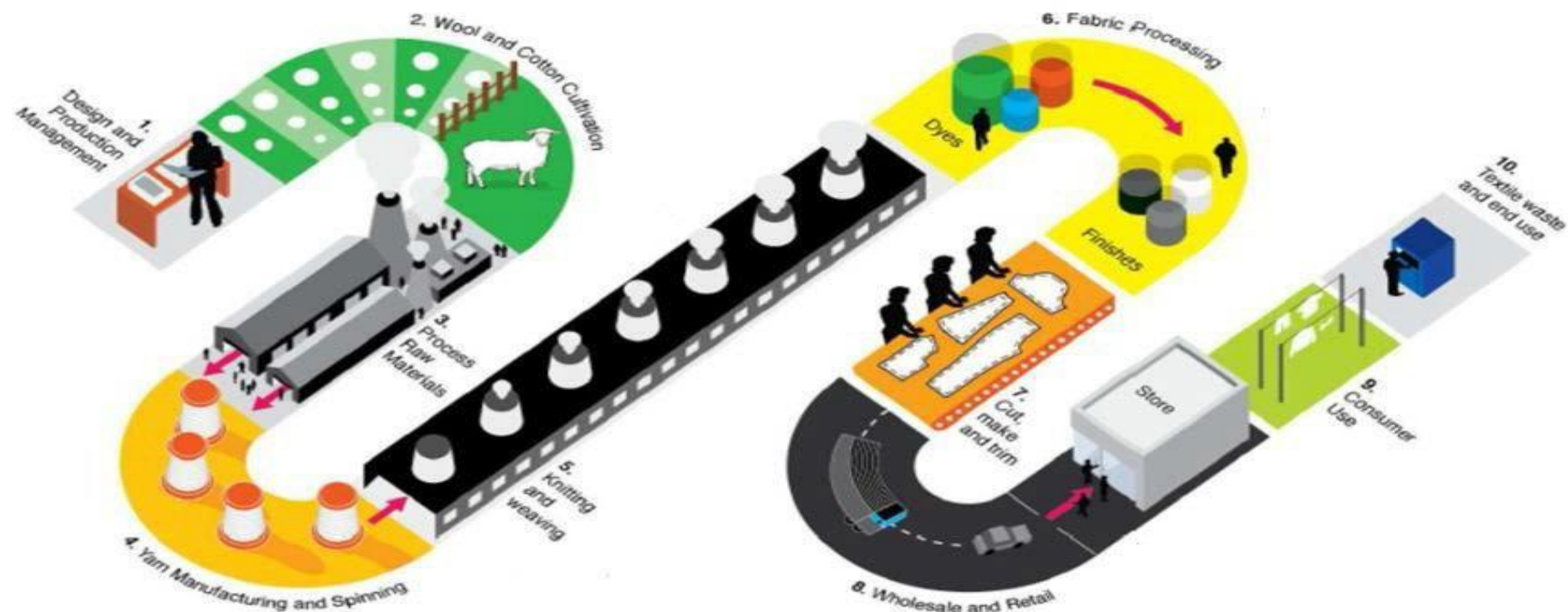


1. Many more companies

| For the financial year 2024 | For the financial year 2025 | For the financial year 2026 |
|--------------------------------|---|--|
| Large listed companies/groups: | Large companies/groups that meets two of the following criterias: | Små & medelstora börsnoterade bolag/koncerner som uppfyller två av följande kriterier: |
| >500 employees | >250 employees | 10-250 anställda |
| | >Euro 50 milj in net sales | >Euro 700 000) in net sales |
| | >Euro 25 milj in total assets | >Euro 350 000 in total assets |

Also all noneuropean companies that are listed within EU, and that has a net sales of 150 miljoner Euro and atleast one subsidiary or branch within EU, are covered.

To sum it up – from fibre to ready product



transiti*ns